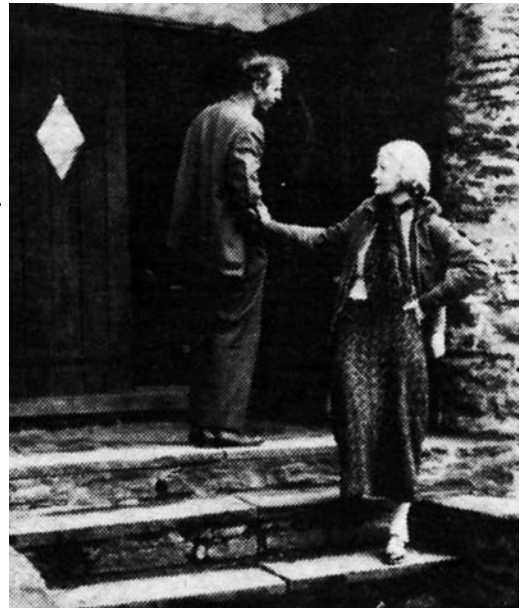


Take A Trip To Hedgerow!

Hedgerow Theatre was founded in 1923 in the midst of utopian Arts and Crafts colony. Today, the theatre retains its uniqueness and rustic charm, offering an eclectic selection of comedies, classics, mysteries and new plays in its 144-seat theatre housed in an 1840s grist mill. Under the direction of Producing Artistic Director Penelope Reed, its year-round productions have garnered critical acclaim from critics and audiences alike. Our patrons again and again cite the "wonderful ambience of historical mill setting and quality of the performances" and "beautiful setting, intimate feel and interesting productions" they come to see in our 1840 grist-mill surrounded by the lush greenery of Rose Valley.

Hedgerow was lauded as "the mother of all regional theatres," at a National Theater Conference recently held in Philadelphia, and *The Philadelphia Inquirer*, marveled on the occasion of Hedgerow's 85th birthday, that the company was "still edgy after 85 years."

The theatre is one of the few companies offering residencies to emerging theatre artists, who join equity special guests artists to "play in the hedgerows." The theatre's **Signature Series** productions feature the region's top professional actors who explore new plays and contemporary classics, giving audiences seated in the intimate 144-seat theatre a powerful and intimate theatre experience.



Hedgerow founder Jasper Deeter on the steps of Hedgerow with film star Ann Harding, 1930s



Hedgerow's **Heritage Series** is where you'll see talented young performers - tomorrow's future stars - playing alongside our ensemble of company veterans, in popular mysteries, comedies and classics.

Hedgerow Theatre has a long history of launching theatre careers. Among the famous who have appeared on its stage are 1930s film star Ann Harding; *Dark Shadow's* star Grayson Hall, and Keanu Reeves. Many now-acclaimed Philadelphia actors began their careers at Hedgerow including Tom McCarthy, Greg Wood and countless others.

Hedgerow's Producing Artistic Director Penelope Reed with Jared Reed in *The Glass Menagerie*.

If You Attend With 12 Or More People, You Are A Group!

Seniors

With select 1 p.m. Wednesday Afternoon Complimentary Tea Party Intermission Shows; select performances on Saturdays at 4 p.m. and 2 p.m. Sunday matinees in addition to our regular evening shows, we can fit your schedule! We also offer easy access and wheelchair seating. Complimentary intermission refreshments include coffee, tea, and iced tea and snacks. Free on-site parking for buses. Complimentary tickets to the escort and driver are included.



Enjoy our Wednesday shows and teas!

Churches, Clubs, Organizations and Corporations



A trip to Hedgerow is a great group event!

Bring your church, club members or employees closer together with an enjoyable outing! Whether you are hosting a fundraiser or simply looking for a fun event to share together, the Hedgerow Theatre, in the words of our audience members, offers “wonderful plays and actors” and great “quality and diversity of shows. There’s something for everyone’s tastes.”

We’ll make this your most memorable get-together ever! Enjoy fabulous entertainment at great group discounts. The Hedgerow lobby can be reserved before and/or after the show. You can use the space any way you wish – bring wine and cheese for a pre-show soiree or cakes and sweets for a post-show chat. Hedgerow will provide coffee and intermission snacks. The cost is \$100 per hour. Dining suggestions in the area can be provided at your request.

Tours

Take advantage of our affordable group rates - come to us or let us come to you! We offer touring productions which can be tailored to fit your performing space and time requirements. Seasonal offerings include fall productions of *Tales From Poe* and December productions of *A Christmas Carol*. If you have a very large group (80 or more), we may be able to arrange a special performance for you!

How far in advance can I request tickets?

If you can pick a date, we can take a request! We require a 50% deposit 2 weeks prior to the performance and the rest of the balance is due on the day of the performance. Should your group have to cancel, this deposit can be applied to another show. We accept VISA, MasterCard, and personal checks.

What Are The Group Discounts?

SHOW DAY	SINGLE TICKET	STANDARD GROUPS	RETIREE GROUPS
Wednesday 1 p.m.	\$22	\$17.50	\$16
All other days/ times	\$25	\$20	\$16
ALL STUDENT GROUPS		\$10 (Free for student chaperones)	

Will my group be assigned seats?

Yes, we will make every effort to seat your group together. If this is not possible, your group may be split into smaller groups. Please note that the further in advance you place your order, the greater chance your seating requests will be accommodated.

Do you have service fees?

We do not charge any service fees for group orders placed through our group sales office. However, if you chose to pay by credit card, there is a \$10 handling fee.

Can I change my order?

You may add tickets up until the day of the performance. Ticket numbers may be decreased up until 1 week prior to the performance, however, if the group falls below 12 we can no longer apply the group rate.

Will I be mailed tickets?

We will hold your tickets at the box office for your convenience. Simply have your group leader pick them up when your groups arrives.

Who do I contact?

You can reach our Group Sales team at 610-566-4034 ext. 104 or via e-mail at groupsales@hedgerowtheatre.org.

How Do I Get To Hedgerow Theatre?

Because it is a unique experience - so close to Media, PA, Delaware County Seat, and Swarthmore, yet situated in nature among the beautiful homes of an earlier era - directions may help you find the theatre at 64 Rose Valley Road, Media, Pa. 19063, with ease.

From Center City Philadelphia:

I-95 South past the airport to I-476 North. Get off I-476 at Exit # 3 (Media/Swarthmore) and turn left towards Media. This will put you on Baltimore Pike. Go 1.1 miles and you will see a Dunkin Donuts on the left. Make a left at this light onto Manchester Avenue, where you will travel about 1 1/2 miles. Manchester turns into Rose Valley Road just after you pass the Rose Valley Train Station. We are on the left just after you see the yellow flashing light above the road. Look for an old stone building.

From The Main Line:

Take I-76 West to I-476 South. Get off I-476 at Exit #3 (Media/Swarthmore) and go right towards Media. This will put you on Baltimore Pike. Go 1.1 miles and you will see a Dunkin Donuts on the left. Make a left at this light onto Manchester, where you will travel about 1 1/2 miles. Manchester turns into Rose Valley Road just after you pass the Rose Valley Train Station. We are on the left just after you see the yellow flashing light above the road. Look for an old stone building.

From Paoli/Newtown Square:

252 South to Baltimore Pike in Media. At the light (Starbucks on corner), turn right onto Baltimore Pike. Go 1 block and at the next light you will see a Dunkin Donuts on the left. Make a left at this light onto Manchester Avenue, where you will travel about 1 1/2 miles. Manchester turns into Rose Valley Road just after you pass the Rose Valley Train Station. We are on the left just after you see the yellow flashing light above the road. Look for an old stone building.

From Delaware:

I-95 North to I-476 North. Get off I-476 at Exit # 3 (Media/Swarthmore) and turn left towards Media. This will put you on Baltimore Pike. Go 1.1 miles and you will see a Dunkin Donuts on the left. Make a left at this light onto Manchester Avenue, where you will travel about 1 1/2 miles. Manchester turns into Rose Valley Road just after you pass the Rose Valley Train Station. We are on the left just after you see the yellow flashing light above the road. Look for an old stone building.

From Chaddsford/West Chester area:

Take Baltimore Pike/Route 1 North just past Granite Run Mall. Keep to the left, staying on Baltimore Pike towards Media. Do not take the Media Bypass! In Media, you will pass a Wawa on your right, the Court Dinner and a CVS drugstore on your left. At the next stoplight there will be a Dunkin Donuts on your right (Manchester Avenue) Turn right onto Manchester Avenue, where you will travel about 1 1/2 miles. Manchester turns into Rose Valley Road just after you pass the Rose Valley Train Station. We are on the left just after you see the yellow flashing light above the road. Look for an old stone building.

